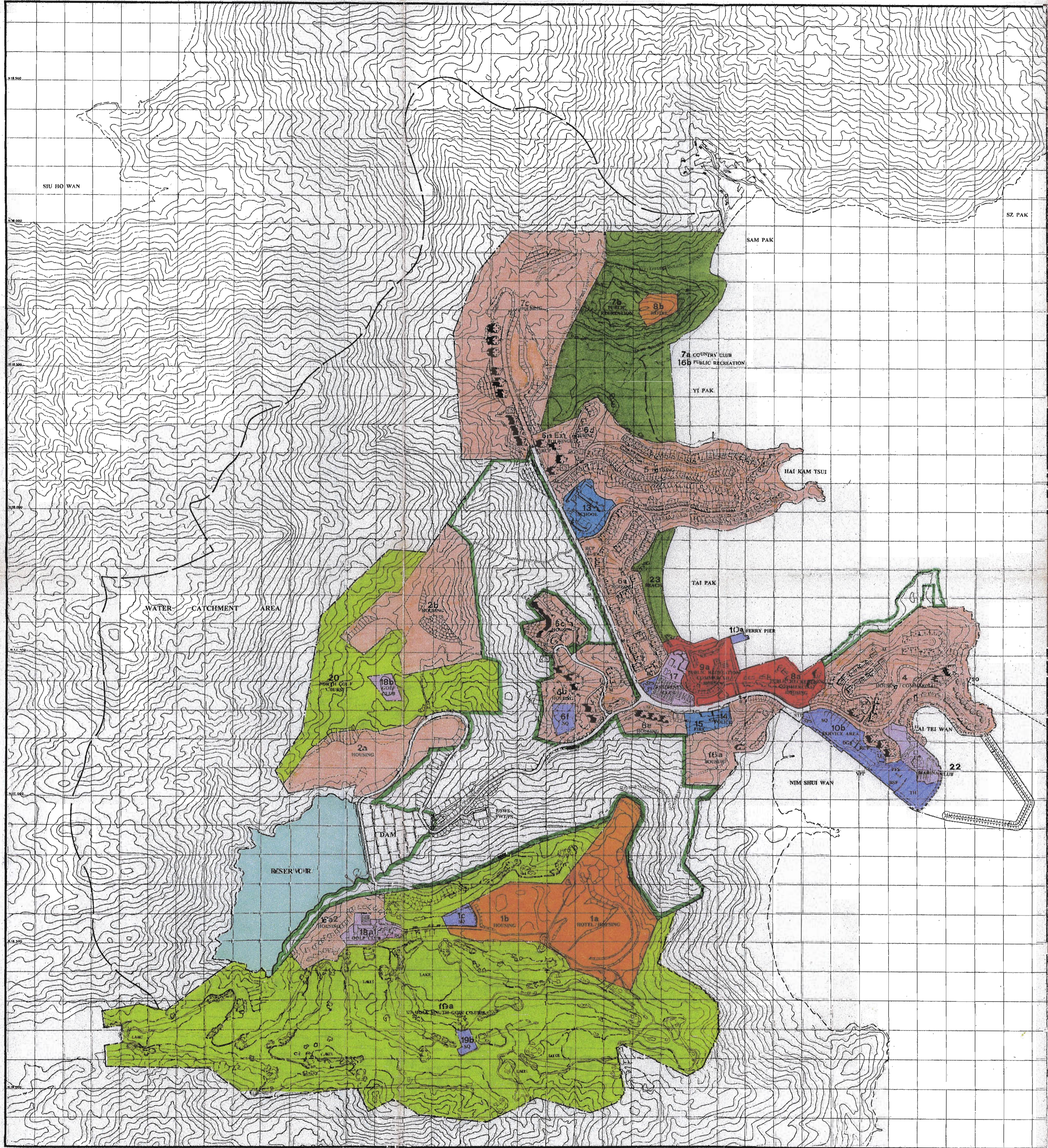


70 in 18/01/161 V.P.C

DISCOVERY BAY MASTER PLAN 5.6

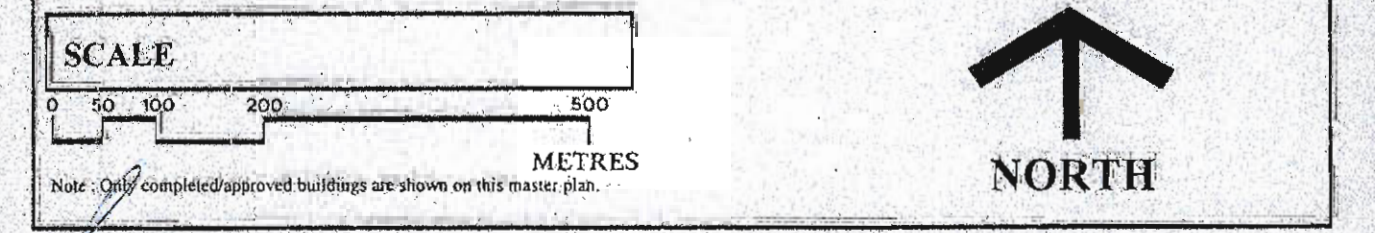


LOT NO.	NO. OF UNITS	GROSS BLDG. AREA (m ²)	GROSS SITE AREA (m ²)	PLOT RATIO
A HOUSING ACCOMMODATIONS				
*1a/1b	30	4,138	(214,800)	0.02
2a/1b	70	(8,300)	237,800	0.04
*4	1,408	134,248	202,660	0.66
5	240	49,543	199,920	0.23
6a	432	51,047	93,400	0.54
*6a/Ex	304	30,643	22,940	1.34
6b	606	47,376	70,160	0.68
*6c	381	38,914	29,448	1.32
6d	70	8,422	13,120	0.64
6e	378	24,494	20,400	1.20
*7c	1,356	103,000	240,000	0.43
*8a/9a	485	34,270	(71,396)	0.48
10a	210	16,715	63,000	0.26
18a2	28	5,806	33,520	0.15
SUB-TOTAL A	6,198	559,510	1,229,308	
B COMMERCIAL				
*4		1,006	--	--
*6a/Ex		65	--	--
6c		40	--	--
*7c		50	--	--
*8a/9a		22,845	71,396	0.32
SUB-TOTAL B		24,006	71,396	
C HOTEL				
*1a/1b	250	15,000	214,800	0.07
8a	150	10,000	13,400	0.75
SUB-TOTAL C		25,000	228,200	
GROSS TOTAL A+B+C		608,516	1,528,904	
D PUBLIC WORKS				
23a	PARKING AREA	2,400	2,900	0.80
100	SERVICE AREAS		50,950	0.19
	GOODWANS	3,710	--	--
	BUS DEPOT	500	--	--
	REFUSE COLLECTION POINT	1,000	--	--
	TPU STORAGE	500	--	--
	TE	700	--	--
	TELEPHONE EXCHANGE	1,100	--	--
	BSF	BOAT SERVING FACILITIES	--	--
	PFS	PETROLEUM FILLING STATION	240	--
	SQ	STAFF QUARTERS	4,500	0.58
11	SQ	STAFF QUARTERS	4,250	0.38
14	SQ	STAFF QUARTERS	6,700	0.42
16	SQ	STAFF QUARTERS	6,000	0.42
	UTILITIES AREAS			
	PS	ELECTRIC SUB STATIONS	2,500	--
	PS	PUMPING STATION	4,185	--
	D/S	DIGLUG STORES	970	--
	M	MANAGEMENT OFFICES	3,000	--
	STP	SEWAGE TREATMENT PLANT	1,000	--
	RCF	REFUSE COLLECTION POINTS	2,500	--
SUB-TOTAL D		33,415	73,104	
E COMMUNITY FACILITIES				
11	SCHOOL	15,180	23,075	0.61
14	POLICE	1,530	4,200	0.31
13	FIRE	1,840	7,100	0.22
SUB-TOTAL E		18,550	36,375	
F RECREATION				
PUBLIC RECREATION				
GOLF COURSES				
7a	COUNTRY CLUB	5,800	37,449	--
7b	PUBLIC RECREATION	--	25,580	--
*8a/9a	PUBLIC RECREATION	3,000	(71,396)	--
10a	PUBLIC RECREATION	23,500	190,741	--
*10a/1	RESIDENTS CLUB	5,500	19,000	--
10a/1b	GOLF CLUBS	5,500	22,785	--
19a	SOUTH GOLF COURSE	--	1,042,875	--
20	NORTH GOLF COURSE	--	210,260	--
22	MARINA CLUB	5,500	18,859 (Land)	--
			83,000 (Marina)	--
25	BEACH	--	70,900	--
SUB-TOTAL F		48,500	1,718,440	
CLUBS				
GRAND TOTAL		708,565	3,356,819	

LEGEND

CS	CONVENIENCE STORE	---	SITE BOUNDARY
TH	TEMPORARY HELIPAD	---	PLANNING BOUNDARY
STP	SEWAGE TREATMENT PLANT	---	NATIONAL AREA BOUNDARIES
FWT	FRESH WATER TREATMENT	*	AREAS WITH MIXED USAGE
SWS	SALT WATER STORAGE		
FWS	FRESH WATER STORAGE		
SO	SEWAGE OUTFALL		
WPS	WATER PUMPING STATION		
PFS	PETROLEUM FILLING STATION		MINIMUM ASSOCIATED FACILITIES
VFP	VEHICULAR FERRY PIER		FRESHWATER TREATMENT AREA
SQ	STAFF QUARTERS - QUARTERS FOR STAFF		STP
	RELATED TO THE OPERATION, MAINTENANCE AND MANAGEMENT OF DISCOVERY BAY		10a

			DAM AND RESERVOIR



HONG KONG RESORT CO. LTD.

Plan approved in accordance with Special Condition No. 6 of New Grant No. 6122.

[Signature] (R.D. Pope)
Director of Lands

Date: June 1994

April 1994